

ROMFORD TOWN CENTRE

Protective Marking:	Non Restricted
FOIA Exemption	Y
Suitable for Publication Scheme?	N
Title:	Romford Town Centre – Night time Economy
Storage:	HQTA00038054
Summary:	A profile analysing the last 12 months of criminality in and around Romford Town Centre covering the night time economy
Purpose:	To inform plan owner
Relevant to:	Romford Town Centre
Owner & Authorising Officer warrant/pay number	Insp. Richard Ruane
Authors and warrant / pay numbers	
Creating B/OCU or Branch and Code:	MET INTELLIGENCE SCO36
Date Created:	24/08/2018
Review date:	24/08/2019

Data Selection Process:

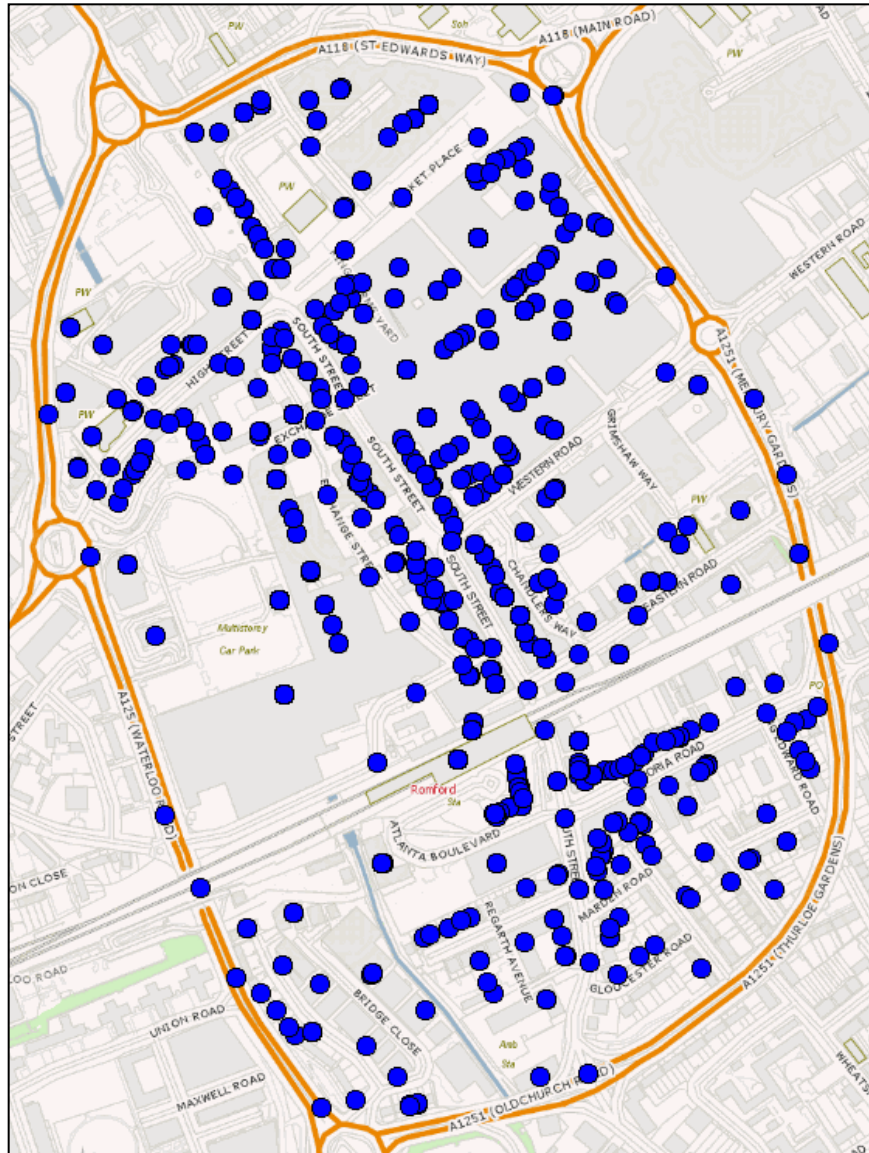
Time period: 01 August 2017 – 31 July 2018 (for review purposes the previous 12 months was also analysed).
Offences committed only between 1800 – 0700 have been included in the analysis.

Area: KD (Havering) only, specifically Romford Town Centre

Offence classifications included: All crime

Additional: This report has been created using map layers produced by the Data Development Team (DDT) and therefore there may be anomalies between that taken from bespoke CRIS searches and those produces by the DDT. This is down to classification and geocoding differences and whilst every effort has been taken to minimise these anomalies, it is an accepted risk that some incidents may have been classified or geocoded differently and therefore will have fallen outside the scope of this analysis.

ROMFORD TOWN CENTRE



Geographic Analysis

As demonstrated by the map, crime in this time period are dispersed across the area with no discernible pattern and no areas of clear focus.

In total there were 1504 offences during the period analysed. The breakdown shows theft offences (even during night time hours) had the greatest number of offences, responsible for 35.2% of all offences during this period. Violent offences trail behind slightly (30.1%) and combined these 2 offence types account for 65.3% of all offences.

In comparison to 2016/17, there was an increase of 123 crimes during the night time economy. In particular theft offences saw the biggest increase.

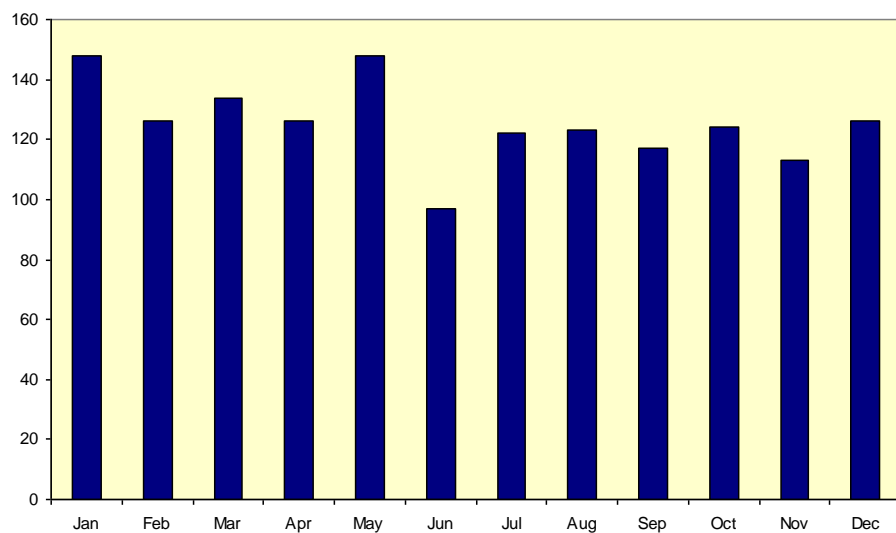
Type	Count
Theft related	530
Violence	452
Drugs	126
Other related crime	346
Robbery	50
Grand Total	1504

ROMFORD TOWN CENTRE

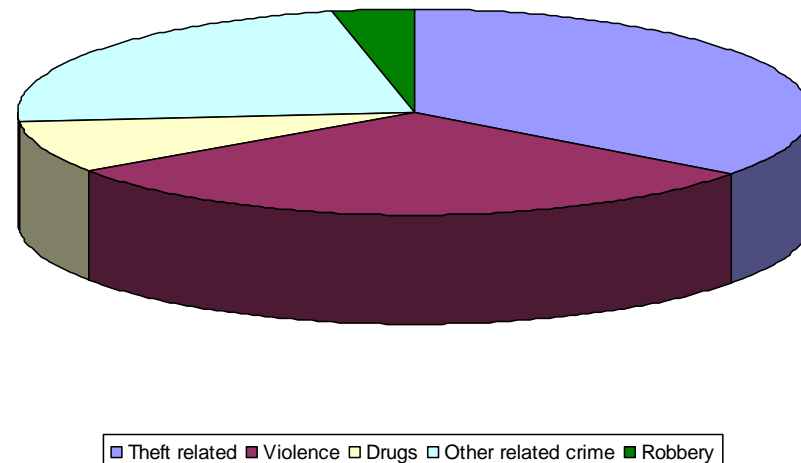
LAST 12 MONTHS

01/08/2017 – 31/07/2018

Crime count by Month

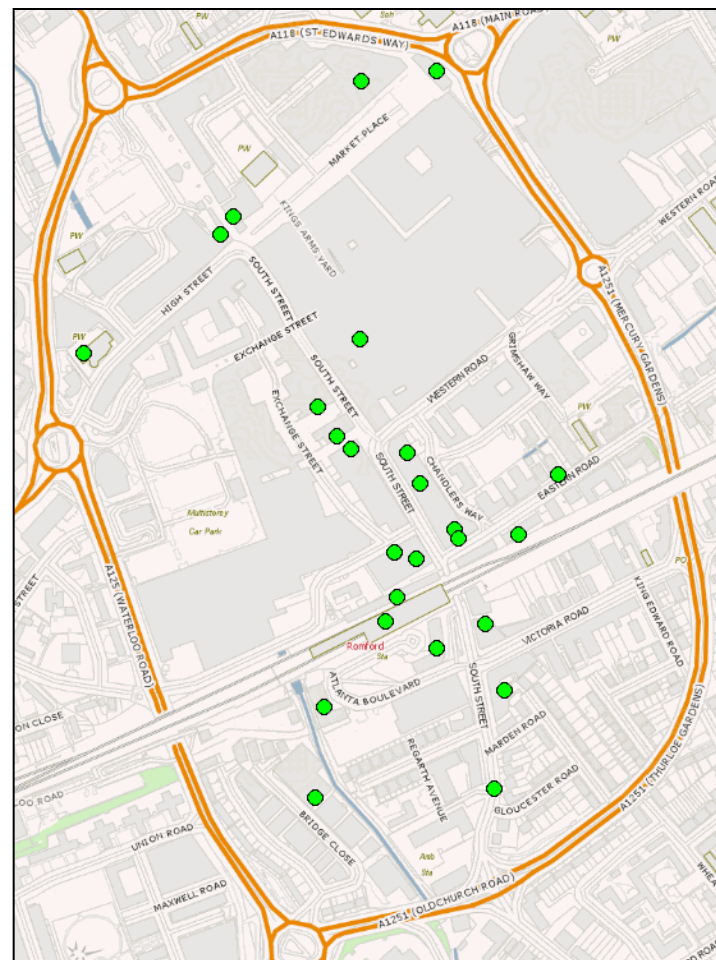


Crime count by Type



01/08/2017 – 31/07/2018

Robbery

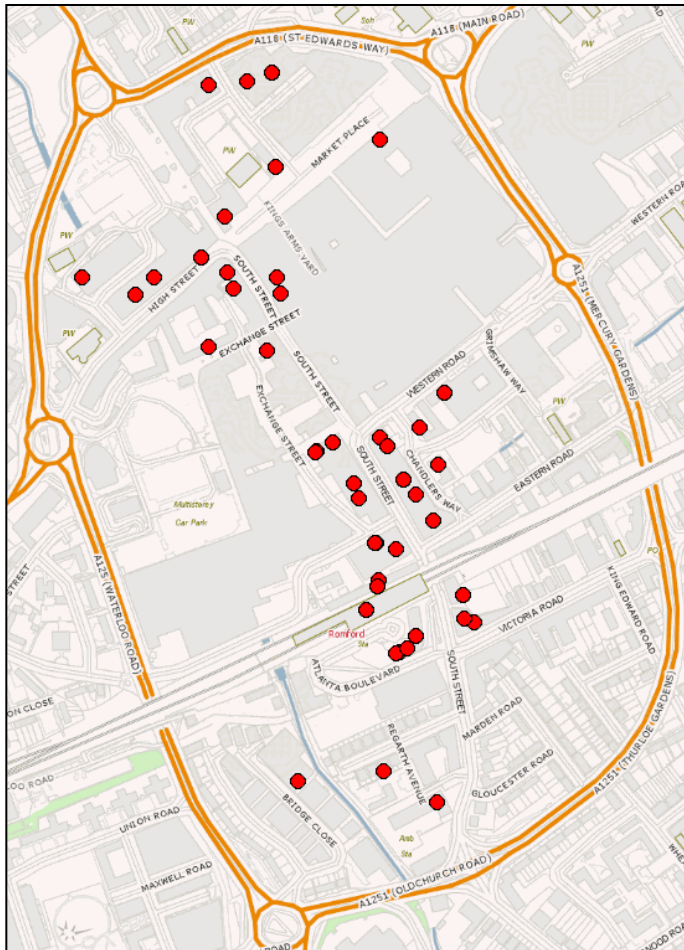


ROMFORD TOWN CENTRE

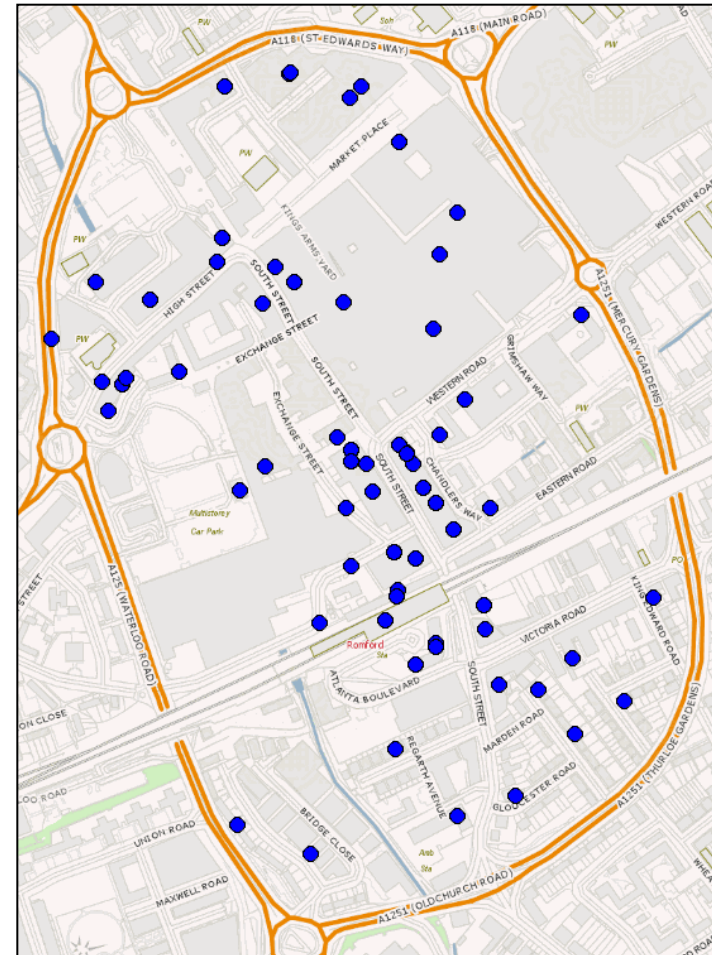
LAST 12 MONTHS

01/08/2017 – 31/07/2018

Drugs



Theft and Handling

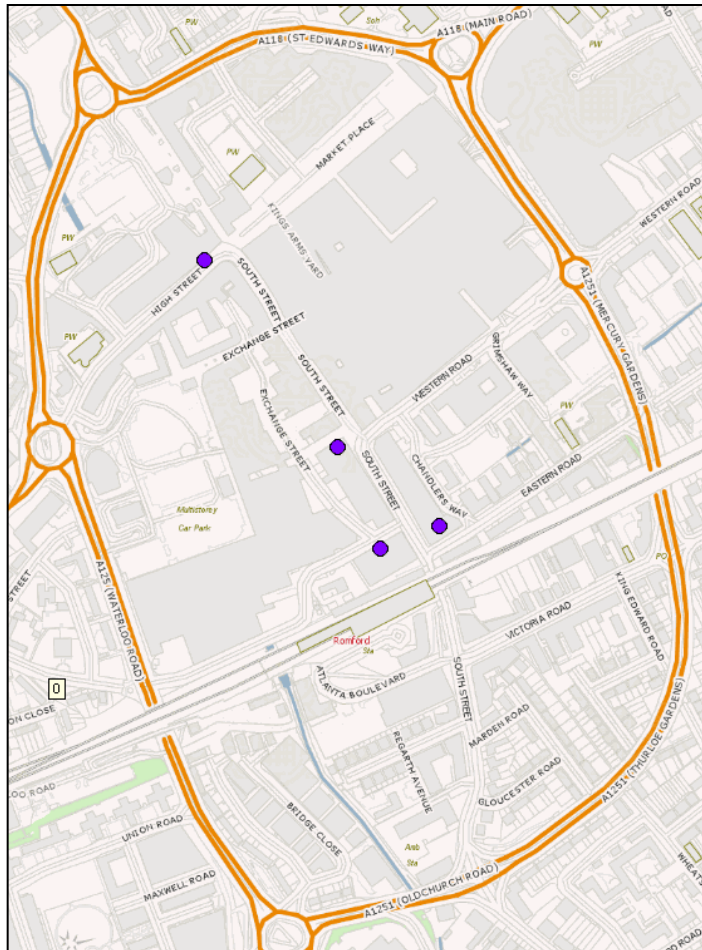


ROMFORD TOWN CENTRE

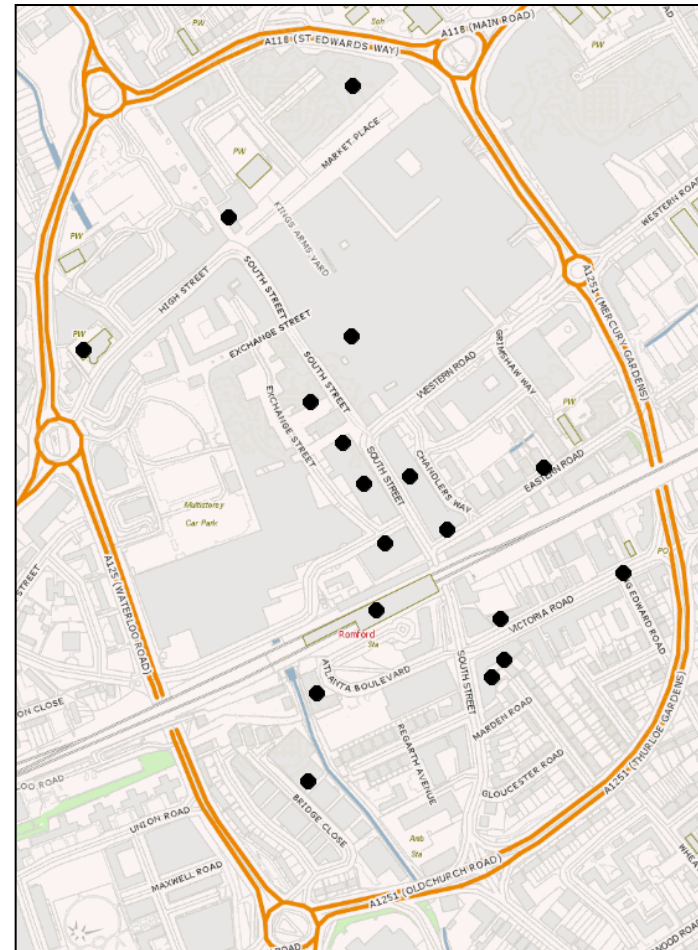
LAST 12 MONTHS

01/08/2017 – 31/07/2018

Gang



Knife



ROMFORD TOWN CENTRE

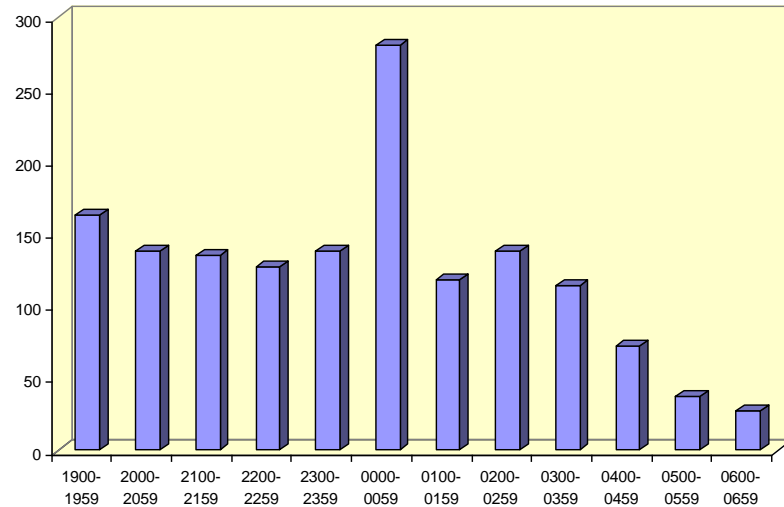
TEMPORAL ANALYSIS

all crime

Key Times

- When analysing all crime by offence time, the top graph demonstrates a clear busy period between midnight and 1am with offences continuing at a lesser, more consistent rate throughout the evening / night.
- The rate of offending then trails off significantly with offences least likely to take place between 4am and 7am.

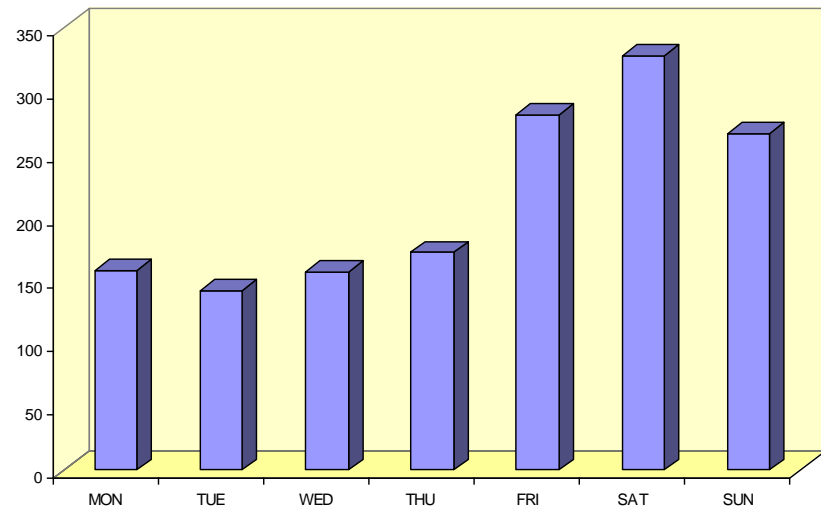
Crime count by time



Key Days

- There is a clear spike in the latter part of the week, from Friday to Sunday.
- Saturday is the most frequent day with 328 offences taking place on it, followed closely by Friday (281) and Sunday (266).
- There are no days where little to no offences take place, although Tuesday has the lowest number of offences at 142 (11%).

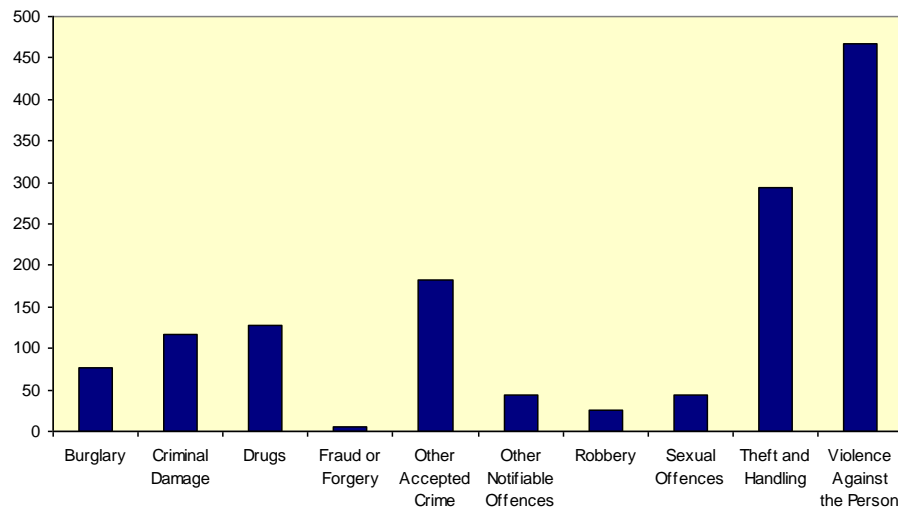
Crime count by day



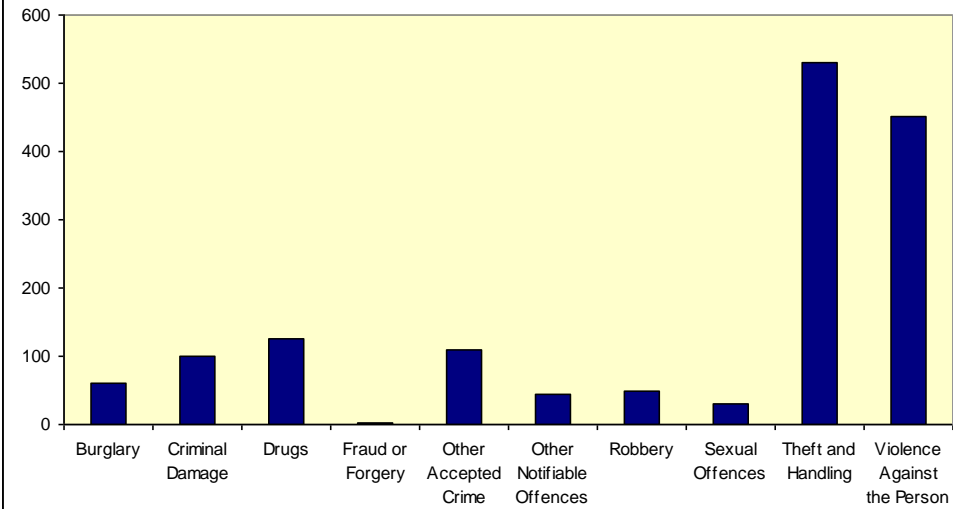
ROMFORD TOWN CENTRE

YEARLY COMPARISON by type

Crime count by type
2016/17



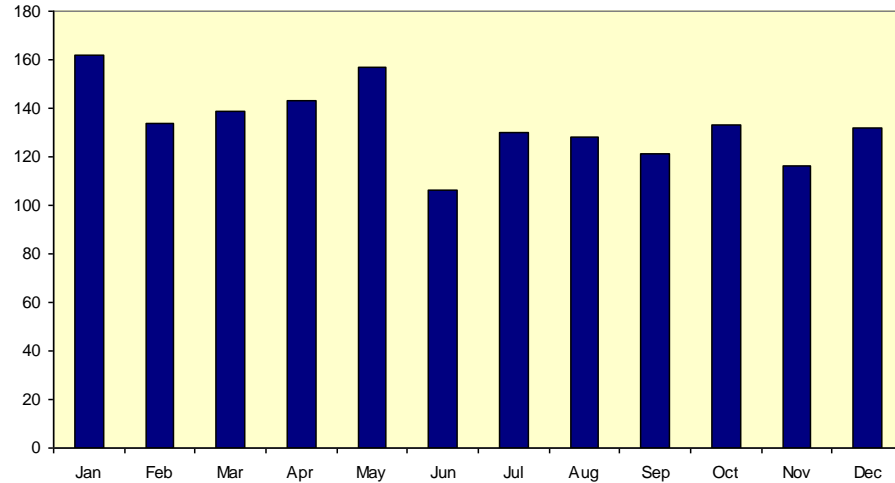
Crime count by type
2017/18



ROMFORD TOWN CENTRE

YEARLY COMPARISON by month

Crime count by Month
2017/18



Crime count by Month
2016/17

